



# Drill motors DME20PW | DME20PU | DME20CW

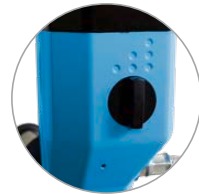
Core drilling up to Ø 180 mm



Compact, robust and ergonomic design



Performance and service indicator and levelling aid for easy working



Quick changeover between wet and dry drilling with DME20PU

The new generation of DME20 drill motors offers impressive drilling performance in the power segment up to 2 kW. The mechanical and electronic overload protection and the full metal housing ensure a high level of reliability. Built-in performance and service indicators and the levelling aid also enable simple operation.

The DME20 drill motors can be used universally and cover a wide range of applications: wet/dry and hand-held / rig-based (DME20PU), wet and hand-held / rig-based (DME20PW) and exclusively wet and rig-based (DME20CW).



# System & Accessories

## Technical data

Drill motors	DME20PW		DME20PU		DME20CW	
Voltage / Frequency	230 V / 50 Hz	110 V / 60 Hz	230 V / 50 Hz	110 V / 60 Hz	230 V / 50 Hz	110 V / 60 Hz
Type no.	11005500	11005502	11005505	11005506	11005510	11005511
Drill diameter range	15–180 mm					
Nominal power	2.0 kW					
Nominal current	9.3 A	18.6 A	9.3 A	18.6 A	9.3 A	18.6 A
Load speed	540 / 1200 / 2520 rpm					
No load speed	990 / 1900 / 3900 rpm					
Motor cooling	Air					
Tool attachment (external)	1 ¼"					
Tool attachment (internal)	½"					
Operation	Hand-held / rig-based				Rig-based	
Application	Wet		Wet / dry		Wet	
3-speed transmission with oil pump	•	•	•	•	•	•
Electric overload cut-out	•	•	•	•	•	•
Mechanical overload cut-out	•	•	•	•	•	•
PRCD protection switch	•		•		•	
Performance indicator	•	•	•	•	•	•
Service indicator	•	•	•	•	•	•
In transport case packed	•	•	•	•		
Drill rig attachment	Clamping collar 60 mm					

## Dimensions & Weight

Length	399 mm	422 mm	399 mm
Width	109 mm	109 mm	109 mm
Height	304 mm	304 mm	161 mm
Weight	6.6 kg	6.9 kg	6.3 kg

## System & Accessories

Core drilling system with DRU160 Drill rig	
11005500	Electric drill motor DME20PW
10987400	Drill rig DRU160
976014	Vacuum set
10999500	VPE600 Vacuum pump 230 V EU / CH
11000588	Fastening bolt assembly for vacuum base

## Accessories

400439	Extension ½" 100 mm
359475	Extension ½" 200 mm
359476	Extension ½" 300 mm
889232	Extension ½" 400 mm
707230	Extension ½" 500 mm
378198	Extension 1 ¼" 100 mm
359471	Extension 1 ¼" 200 mm
359472	Extension 1 ¼" 300 mm
359473	Extension 1 ¼" 400 mm
359474	Extension 1 ¼" 500 mm
11008234	Centering spike 300 mm (DME20PW)
11008235	Centering spike 400-450 mm (DME20PW)
11008236	Centering spike 300 mm (DME20PU)
11008237	Centering spike 450 mm (DME20PU)
963339	Anti-friction element 1 ¼", max. 2.4 kW
974984	Supporting ring alum. 1 ¼"