

EN



PRODUCT PROGRAMME CONSTRUCTION 2021

Machines and Diamond Tools

2021

Premium grinding tools since 1919
www.tyrolit.com

TYROLIT

The TYROLIT Group

TYROLIT is one of the world's leading manufacturers of grinding and dressing tools as well as a system provider for the construction industry.

Since 1919, our innovative tools have made an important contribution to the technological development in many industries. TYROLIT offers tailored grinding solutions for various applications, as well as a comprehensive assortment of standard tools for customers all over the world.

Headquartered in Schwaz (Austria), the family-owned business combines the strengths of being a part of the dynamic Swarovski Group with a century's worth of individual corporate and technological experience.



TYROLIT headquarters in Schwaz (Austria)

Facts & Figures



80,000+
products



29
production sites



4,400+
employees worldwide



36
sales locations



500+
worldwide patents

Sales companies in Argentina, Australia, Austria, Belgium, Brazil, Canada, China, Czechia, Denmark, Estonia, Finland, France, Germany, Hungary, India, Indonesia, Italy, the Netherlands, Norway, Poland, Portugal, Russia, South Africa, South Korea, Spain, Sweden, Switzerland, Thailand, the UAE, the UK and the USA. **Distributors** in 65 other countries.

Contents

Overview of technologies	4	Ring and hand sawing	16-17
Core drilling	5-7	Table sawing	18-19
Wall sawing	8-9	Floor grinding	20
Wire sawing	10-11	Slurry collectors and power packs	21
Floor sawing	12-13	Grooving & grinding	22
Dry cutting	14-15	Project Services	23



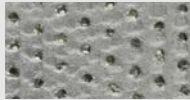
Convincing, technologies



TYROLIT diamond tools with TGD® technology feature intelligently distributed diamonds that enable even load distribution, optimised cooling and a constantly high cutting performance. This significantly extends the tool lifetime and the load on the machines is reduced.

Your advantages:

- + Long lifetime
- + High cutting ability
- + Enhanced efficiency



TGD® Segment



Conventional segment



P2® – PERMANENT POWER – is a high-frequency technology registered by TYROLIT, which combines the compact design of electrical systems with the reliability and performance of hydraulic systems in a single machine to optimum effect. This innovative drive concept is based on the principle of drive motors with permanent magnets and enables operation at a high torque, with simultaneously reduced motor speeds. The maintenance-friendly layout of the compact devices makes servicing easier and reduces costs.

Your advantages:

- + High reliability
- + Powerful performance
- + Compact design



Thanks to the TYROLIT Modular System, individual components can be used for the same area of application and for different applications. This not only makes the work easier and more efficient, it also saves on costs. One part of the TYROLIT Modular System is the ModuDrill™ quick clamping system, for example, which enables our drill motors to be rapidly attached to different TYROLIT drill rigs.

Your advantages:

- + High cost efficiency
- + Efficient working
- + Easy operation



With the MoveSmart Technology, TYROLIT machines are connected to the Internet for the very first time. The technology processes real-time user data directly at the construction site and makes it available on various end-user devices. The cloud-based MoveSmart Technology was developed in collaboration with the Austrian start-up ToolSense and provides users and business owners with important machine and usage data, helping them to get the most out of their equipment. Service hours, error reports and pending software updates, for instance, can be recalled anywhere and at any time. This enables better planning, as well as faster and more cost-efficient operation based on real data.

Your advantages:

- + Increased productivity
- + Reduced service times
- + Targeted product development

Drill motors



★★★
PREMIUM **DME19DP**

Up to Ø 162 mm

1.8 kW

with percussion

★★★
PREMIUM **DME17DP**

Up to Ø 200 mm

2.0 kW

with percussion, 2 gears

★★
STANDARD **DME22SU**

Up to Ø 180 mm

2.2 kW

3 gears

★★★
PREMIUM **DME20PW/PU**

Up to Ø 180 mm

2.0 kW

3 gears

★★★
PREMIUM **DME24MW/UW**

Up to Ø 250 mm

2.2 kW

3 gears

Drill hammer

NEW from summer 2021



★★★
PREMIUM **DME33MW/UW**

Up to Ø 450 mm

3.3 kW

3 gears

★★★
PREMIUM **DME52UW**

Up to Ø 500 mm

5.2 kW

3 gears

★★★
PREMIUM **DGB1000**

Drilling gearbox

Up to Ø 1 000 mm

Hydraulic and electric

DHE32

Up to Ø 32 mm

Universal drill hammer

SDS-plus

incl. 16 mm drill

Core drill bits

Wet



Deep Core Drills



Dry



★★★
PREMIUM **CD**

PREMIUM TGD®:
CDL/CDL-C2/CDM
TGD®-Technologie from Ø 47 mm
PREMIUM: CD660/CD640/
CD840/CDXM/H
Ø 10 – 1 500 mm
roof segments from Ø 47 mm

★★
STANDARD ★
BASIC **CD**

STANDARD: CDL/CDM
BASIC: B1/B1M
Ø 12 – 1 500 mm
Roof segments

★★★
PREMIUM **CDNX**

PREMIUM: CDNX-DCI
Ø 20 - 252 mm (300 mm on
request), extension rods 250, 500
and 1 000 mm lengths
Deep coring up to 40 m depths

★★★
PREMIUM ★★
STANDARD ★
BASIC **DDL**

PREMIUM TGD®: DDL / DDL-HH /
DDL-RM / DDE
STANDARD & BASIC: DDL
Ø 32 – 300 mm
rig mounted (RM):
for reinforced concrete
handheld (HH):
for brick materials



★★★
PREMIUM

CDNX-DCI

- + Deep Core Drills in interchangeable system
- + For deep hole drilling up to 40 m
- + Ø 20 - 252 mm (300 mm on request)
- + Complete system with 11/4" holder
- + Drilling direction stabilisers
- + Scarper as support for abrasive materials
- + Core catcher for removal of drill cores
- + Chain spanner for changing the screwdrill bit
- + Drill stand for deep hole drilling
- + Extensions in 250, 500 and 1 000 mm

Segment overview for wet drilling



TECHNOLOGY

TGD® – optimal grain distribution
PREMIUM CDL, CDM, CDL-C2



EFFICIENCY

Perfect working results
PREMIUM CDXH, CDXM
STANDARD CDL, CDM
BASIC B1



CUTTING PERFORMANCE

High cutting ability thanks to U-Cuts
PREMIUM CD840, CD640, CD660
BASIC B1M

Segment diameter ranges [mm]

	10	42	47	76	289	1500
★★★ PREMIUM	CDL RING	CDL				
		CD660, CD640, CDXM				
		CDXH				
		CDL-C2				
		CDM, CD840				
★★ STANDARD	CDL RING	CDL				
		CDM				
★ BASIC		B1				

Segment widths [mm]

	2,5	3,0	3,5	4,0	5,0	5,5	6,5	7,5
★★★ PREMIUM	CDL RING	CDL-C2						
		CDL						
		CDM, CD660, CD840						
		CD640						
		CDXH						
		CDXM						
★★ STANDARD	CDL RING	CDL						
		CDM						
★ BASIC		B1						

● Low (<2.4 kW)

● Medium (<3.5 kW)

● High (>3.5 kW)

Core drill rigs



★★ STANDARD **DRS162**

Up to Ø 162 mm
Drill system
incl. 2.5 kW drill motor



★★ STANDARD **DRS250**

Up to Ø 250 mm
Drill system
incl. 2.5 kW drill motor



★★ STANDARD **DRA150**

Up to Ø 150 mm
Clamping collar 60 mm
Dowel foot



★★★ PREMIUM **DRU160**

Up to Ø 160 mm
Clamping collar 60 mm
Dowel | Vacuum



★★★ PREMIUM **DRA/U250**

Up to Ø 250 mm
ModulDrill™
Dowel | Vacuum



★★★ PREMIUM **DRU350**

Up to Ø 350 mm
360° rotation, ModulDrill™
Telescoping system



★★★ PREMIUM **BY**

Up to Ø 350 mm
ModulDrill™
2-column-guiding



★★★ PREMIUM **DRA/U400**

Up to Ø 400 mm
ModulDrill™
Dowel | Vacuum



★★★ PREMIUM **DRA500**

Up to Ø 500 mm
ModulDrill™
Extendable



★★★ PREMIUM **BC-2**

Up to Ø 1000 mm
2-column-guiding
Modularity with wire saw

Tile drill-sets



★★★ PREMIUM **Tile drill-sets**

HEX Ø 5-14 M14 Ø20+ XL
Kit HEX M14

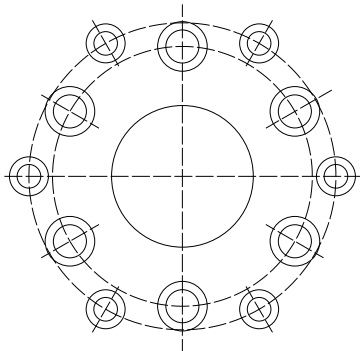


★★★ PREMIUM **Paraffin Tile drills**

HEX Ø 5, 6, 8, 10, 12, 14 mm
individual or as a set

Wall sawing

Product highlights



★★★
PREMIUM

WSE1621

- + THE electric wall saw for everyday use at the construction site
- + Quick assembly and disassembly thanks to tool-free motor fastening
- + Extremely compact motor
- + Radio remote control with display
- + USB interface
- + Small and compact control unit
- + Redesigned, lightweight blade guard
- + Available with MoveSmart Technology

Combination of drive holes

- + For all 12M109 TYROLIT wall saw heads in Central Europe (except WSE811 MKII)
- + For all 6M207 HILTI and HUSQVARNA wall saw heads

★★★
PREMIUM

WSL-FAST CUT

- + Wide-tooth C7-version
- + TGD®-Technology for consistent cutting rate and smooth cutting through rebar
- + Laser-welded segments for highest security up to Ø 1200 mm

Wall saws



★★★
PREMIUM

WSE811 MKII

Up to Ø 825 mm
11 kW (P2®-Technology)
Electric
MoveSmart Technology



★★★
PREMIUM

WSE1621

Up to Ø 1600 mm
20 kW (P2®-Technology)
Electric
MoveSmart Technology



★★★
PREMIUM

WSE2226

Up to Ø 2200 mm
26 kW (P2®-Technology)
Electric



DZ-S2

Up to Ø 1200 mm
Ideal for 20 kW power pack
Hydraulic

Wall saw blades



FZ-4S

Up to Ø 2200 mm
Ideal for 40 kW power pack
Hydraulic



★★★
PREMIUM

WS

WSL-FC, WSL-FC-LL, WSL,
WSL-SILENT, WSM, WSM-SILENT,
WSL-DC
Ø 450 – 2200 mm
TGD® up to Ø 1200 mm



★★
STANDARD

WS

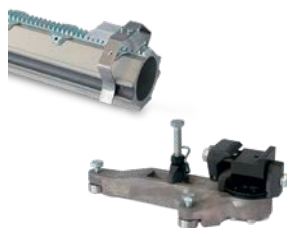
WSL, WSM, WSM-FC
Ø 600 – 1200 mm
TGD®-Technology

Wall saw accessories



Rails

Aluminium rails
Steel rails



Trestles & Stopper

Swivel rail trestles, stopper



Blade Guard

Blade guard All-in-One



Blade Guard WSE1621

Blade guard All-in-One linear

Wire sawing Product highlights



★★★
PREMIUM

WCU17

- + Universal wire saw
- + Simplified wire guidance
- + Ergonomic and light components
- + Reduced weight of components



★★★
PREMIUM

DWL-CF

- + Vitrified wire for concrete
- + Very fast cutting performance
- + Noticeable smooth running due to optimized bead and wire construction
- + High level of safety due to robust construction

Wire sawing



★★★ PREMIUM **SB-E | SB**

Gross wire length 15.5 m
Electric and hydraulic
SB: ATEX certified



★★★ PREMIUM **WCU17**

Gross wire length 17 m
Electric and hydraulic



★★★ PREMIUM **WCE18**

Gross wire length 19 m
Electric



★★★ PREMIUM **WCE30**

Gross wire length 31,5 m
Electric



★★★ PREMIUM **CCE/H25**

Circular wire saw, Ø 500 – 2,500 mm
Electric and hydraulic

Diamond wire

Concrete



★★★ PREMIUM **DW**

DWM / DWL
For concrete
Electroplated and sintered
Ø 10.2 and 8.5 / 11 mm



★★ STANDARD **DW**

DWM / DWL
For concrete
Electroplated and sintered
Ø 10 / 11 mm

Steel



★★★ PREMIUM **DWH-S/S-ATEX/SL**

DWH-S ATEX: ATEX certified
For steel / non-ferrous metals
Electroplated, also as loops (SL)
Ø 11 mm



★★★ PREMIUM **DWM-S/SL**

For steel
Electroplated, also as loops (SL)
As loop in yellow rubber
Ø 10.2 mm

Wire saw accessories



Hand press

80 kN
Hydraulic



Connections

Cardanic and repair connectors

Floor saws



★★★
PREMIUM

FSG513

Up to Ø 450 mm

8.2 kW

Petrol



★★
STANDARD

FSG620

Up to Ø 600 mm

15 kW

Petrol



★★★
PREMIUM

FSE811

Up to Ø 800 mm

7.5 kW

Electric



★★
STANDARD

FSD930

Up to Ø 900 mm

22 kW

Diesel



★★★
PREMIUM

FSD1049

Up to Ø 1 000 mm

36 kW

Diesel



NEU

★★★
PREMIUM

FSE1022

Up to Ø 1 000 mm

22 kW

Electric



★★
STANDARD

FSE1240

Up to Ø 1 200 mm

30 kW

Electric



★★★
PREMIUM

FSD1274 3-GEAR

Up to Ø 1 200 mm

55 kW

Diesel

Floor saw blades

Cured concrete



★★★ PREMIUM **FS-C**

FSL, FSM, FSH-C, FSX-C3

Ø 350 – 1200 mm

TGD®-Technology



★★★ PREMIUM **FSC**

Ø 300 – 800 mm

For low powered machines

Asphalt



★★★ PREMIUM **FS-A**

FSL-A, FSM-A, FSH-A

Ø 300 – 1200 mm



★★★ PREMIUM **FSA**

Ø 300 – 800 mm

Green concrete



★★★ PREMIUM **FS-G**

FSL-G3/G4 | FSM-G3/G4/G5

Ø 300 – 600 mm



Chamfering

For various widths of joints

Chamfer cutter 45°

Diameter 280 mm, two-part

The NEW Dry Cutting Assortment

Increased performance by up to 30%

- + Powerful tools, extremely high cutting speeds and outstanding durability

Compact assortment

- + Streamlined product palette with solutions for all common construction materials

Innovative and user-friendly

- + Entirely tailored to current market demands and today's powerful machines

New look

- + Re-designed segments, clear labels and updated packaging

Highest product safety

- + Complete assortment in compliance with OSA and EN13236 regulations

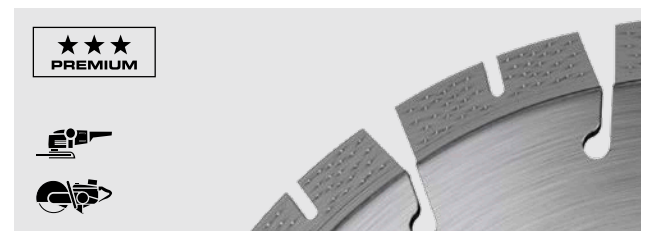
Upgraded segments for outstanding results



★★★ PREMIUM

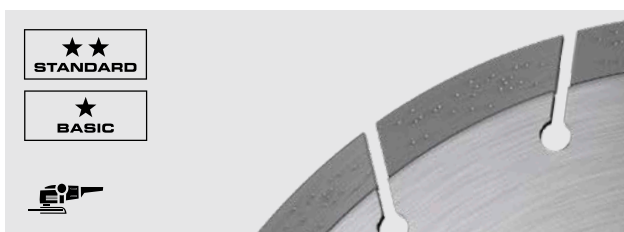
TGD[®] TECHNOLOGY

New, even more **intelligent diamond pattern** allows for **more efficiency**



★★★ PREMIUM


Increased cooling effect due to new U-shaped cuts



★★ STANDARD

★ BASIC

Performance increase due to new segment shape



★★ STANDARD

★ BASIC

Reduced segment surface ensures a higher cutting rate

The composition of the segments is different for all quality lines.

For more information on our new dry cut range, please see our [range flyer](#).

Dry cutting saw blades

NEW



★★★ PREMIUM ★★ STANDARD ★ BASIC

Universal

DCU TGD® Ø 230 – 400 mm

DCU Ø 105 – 400 mm

Ø 400 mm for flush cutting

Also in DCE-SILENT in TGD®

NEW



★★ STANDARD ★ BASIC

Hard Stone

DCH Ø 115 – 125 mm

DCH TGD® Ø 230 – 400 mm

Ø 400 mm for flush cutting

Also in FC

NEW



★★★ PREMIUM ★★ STANDARD

Concrete

DCC

Ø 115 – 400 mm

Also in FC & LL

NEW



★ BASIC ★★ STANDARD ★ BASIC

Asphalt & Concrete

DCA+C

Ø 115 – 450 mm

NEW



★★★ PREMIUM

Cut-All

Cut-All

Ø 115 – 350 mm

For all materials

NEW



★★★ PREMIUM ★★ STANDARD

Universal

Roofer's

Ø 230 mm

NEW



★★★ PREMIUM ★ BASIC

Tiles & Marble

PREMIUM: DCT, DCM

BASIC: DCT

Ø 100 – 350 mm

NEW



★★★ PREMIUM

DCP Porcelain stoneware

Ø 115 – 125 mm

Cup grinder



★★★ PREMIUM ★★ STANDARD

PREMIUM: DGU / DGU Turbo

STANDARD:

DGU double row / single row,
DGU Turbo, DGU-T Continuous,
DGU-FC L-Segment, DGAB,
DGC, DGH

Ø 100 – 180 mm

Specials



★★★ PREMIUM **DCCI COMBI**

DCCI Combi for plastic pipes

Ø 125

Brick grinder



DGBM / H / X

Brick grinder for hollow bricks

Ø 500 – 900 mm

TGD®-Technology

Ring and hand sawing

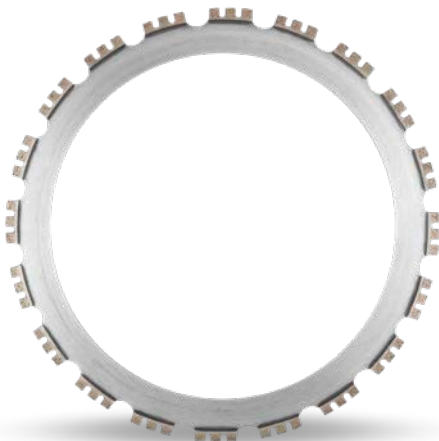
Product highlights



★★★
PREMIUM

HRE410

- + 6.5 kW P2[®] motor
- + Intelligent ergonomics – handle can be rotated 90° for horizontal cuts
- + Modular use with WSE1621 wall saw system



★★★
PREMIUM

RSL-FC

- + For concrete and reinforced concrete
- + Universal use and very fast cutting performance
- + RSL without U-Cuts
- + Perfectly adapted for TYROLIT Hydrostress ring saw HRE410

Hand saws



★★★ PREMIUM **HBE400**

Up to Ø 405 mm
Cutting depth up 150 mm
Flush cutting function



★★★ PREMIUM **HRE410**

Up to Ø 405 mm
Cutting depth up 300 mm
Modular use with WSE1621 wall saw system

NEW from summer 2021



AGE125

Up to Ø 125 mm
900 W
Soft start

NEW from summer 2021



AGE230

Up to Ø 230 mm
2.1 kW
Soft start

Hand saw blades



★★★ PREMIUM **HS**

HSL, HSM, HSX
Ø 405 – 416 mm
TGD®-Technology



★★ STANDARD **HSL-FAST CUT**

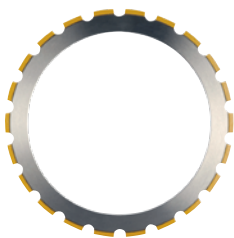
HSL-FC
Ø 350 mm
Pre-cutting blade



★★★ PREMIUM **HSX-FAST CUT**

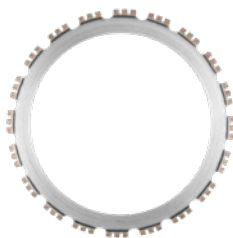
HSX-FC
Ø 416 mm
TGD®-Technology

Ring saw blades



★★★ PREMIUM **RS**

RSL & RSM
Ø 366 – 506 mm



★★★ PREMIUM **RSL**

RSL-FC & RSL-C
Ø 306 – 406 mm

Cellular concrete band saw

Product highlights



★★
STANDARD

TBS510

- + For processing of aerated concrete and for various types of brick
- + Fast and hassle-free changing of saw bands
- + Automatic saw cut off
- + High lifetime and automatic saw band tensioner
- + Low maintenance intensity thanks to direct driver of saw band rollers

Table saws



★★★ PREMIUM TRE250

Tile saw
Up to Ø 250 mm
Cutting length 1,050 mm



★★ STANDARD TBE400

Masonry saw
Up to Ø 400 mm
Swivelling saw head



★★★ PREMIUM TME700

Masonry saw
Up to Ø 700 mm
Mitre stop



★★★ PREMIUM TME1000

Masonry saw
Up to Ø 1 000 mm
Mitre stop

Table saw blades



★★★ PREMIUM TSU/TSU-SILENT

Universal
Ø 250 – 1000 mm



★★★ PREMIUM TSH/TSH-SILENT

Hard stone
Ø 300 - 350 mm



★★★ PREMIUM DCT

Tiles
Ø 180 – 350 mm



★★★ PREMIUM ES-T

Marble
Ø 250 – 350 mm

Circular concrete band saw



★★ STANDARD TBS510

Cutting height up to 510 mm
Quick fastening band saw change

Floor grinding



★★★
PREMIUM

FGE250

Grinding width 250 mm

2.2 kW

Swivelling grinding head



★★★
PREMIUM

FGE400

Grinding width 400 mm

4 kW

Single grinding head



★★★
PREMIUM

FGE450

Grinding width 450 mm

2.2 kW

3 grinding heads



★★★
PREMIUM

FGE530

Grinding width 530 mm

4 kW

3 grinding heads

Floor grinding tools



S-LINE

Soft concrete

Single- and double segments

For Schwaborn ETX1 & ETX2, HTC EZchange™, Husqvarna REDI LOCK®



M-LINE

Moderately hard concrete

Single- and double segments

For Schwaborn ETX1 & ETX2, HTC EZchange™, Husqvarna REDI LOCK®



H-LINE

Hard concrete

Single- and double segments

For Schwaborn ETX1 & ETX2, HTC EZchange™, Husqvarna REDI LOCK®



X-LINE

Extremely hard concrete

Single- and double segments

For Schwaborn ETX1 & ETX2, HTC EZchange™, Husqvarna REDI LOCK®



C-LINE

Removing

Single- and double segments

For Schwaborn ETX1 & ETX2, HTC EZchange™, Husqvarna REDI LOCK®

Grinding wheel depictions are sample images

For more information on our floor grinding range, please see our [range flyers](#).



Slurry collectors



★★★ PREMIUM **SPP400**

Capacity 2.4 l
 Recycling of 400 – 600 l/hr
 Mobile solution for small construction sites



★★★ PREMIUM **SPP600**

Capacity 6.4 l
 Recycling of 400 – 600 l/hr
 Mobile and stationary use



★★★ PREMIUM **SPP1200**

Capacity 30 l
 Recycling of 2,000 l/hr
 High filter capacity for industrial use on large-scale construction sites

Power packs



★★ STANDARD **PPH25**

25 kW
 2 stages



★★★ PREMIUM **PPH25RR**

25 kW
 4 stages
 Radio remote control



★★★ PREMIUM **PPH40RR**

40 kW
 4 stages
 Radio remote control

Presses



★★★ PREMIUM **CP-110/BTH350**

Pressing force 108 / 260 t
 3 / 2 cylinder strokes



★★★ PREMIUM **Power pack AU**

Up to 2,000 bar

Crushers



★★★ PREMIUM **Crusher BZ**

For wall thicknesses of 120 – 300 mm



★★★ PREMIUM **Power pack BW-2**

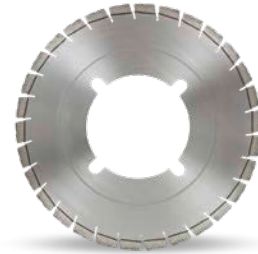
Up to 750 bar

Grooving & grinding



PC4504CE

- + Bump grinder for concrete and asphalt
- + Performance 426 kW / 575 PS
- + Blade shaft speeds: 1,315 RPM to 1,900 RPM
- + Up to 250 diamond saw blades
- + For blade diameters up to 485 mm (18"), bore 203.2 mm
- + Width of the grinding shaft: 127 cm (50 inch)
- + 9 m length, 3 m high, 25.4 t weight
- + CE certified



★★★
PREMIUM

BGX-C3 in TGD®

- + Exceptional and consistent cutting performance
- + Very long life time
- + Noticeable smooth running with TGD® technology
- + Innovative diamond segment design
- + Clean cutting edges
- + Various specifications for different concrete aggregates

Find more products for grooving and grinding on www.tyrolit.com

Machine range



PC4504CE Groover & Grinder



PC1504 Pavement Grinder & Groover



PC6004EC Highway Grinder



CG-1 Mini Groover & Grinder



CG-2E30 Walk Behind
Mini Groover & Grinder

Your reliable partner for customized solutions

Alongside the standard assortment, TYROLIT also offers machines, tools and project support for special construction projects like the controlled decommissioning of offshore facilities and nuclear power plants, as well as the construction and reconstruction of tunnels.

Tailored products

For special applications in small or large complex projects, the TYROLIT Project Service team delivers ingenious solutions that get our partners to their goals quickly and efficiently. In addition to a wide range of products, the TYROLIT Project Service Team supports its customers with:

- + Feasibility studies
- + Planning concepts
- + Principle sketches
- + Customised products for machines & tools
- + Project management
- + Training courses

You can find even more information in our Project Services Brochure or at www.tyrolit.com



Tyrolit Construction Products GmbH

Swarovskistraße 33 | 6130 Schwaz | Austria

Tel +43 5242 606-0 | Fax +43 5242 63398

Our **worldwide subsidiary companies** can be found
on our website at www.tyrolit.com



Find us on social media
TYROLITgroup